



# CONTROL CONTRACTOR

SCALABLE, INTEGRATED, INSTALLED AUDIO SOLUTIONS

2023





# Contents Guide

About JBL.....	2-5
<b>Ceiling Loudspeakers</b> .....	6-11
Control 10 Series Blind-Mount Small Format.....	6
Control Contractor 20 Series Small Format.....	8
Control 40 Series Constant-Directivity.....	9
Control 200 Series Medium-Format.....	10
Control 300 Series Large-Format.....	11
CSS Commercial Series.....	12
8100 Series with Stylised Grille.....	13
<b>Pendant Loudspeakers</b> .....	16-17
Control 60 Series.....	16-17
<b>In-wall Loudspeakers</b> .....	18
Control Contractor 100 Series.....	18
<b>Surface mount</b> .....	19-33
Control Pro Series.....	19
Control Contactor 20 Series.....	22-23
Control 50 Series Subwoofer/Satellite.....	25
Control CRV Architectural.....	28
Control HST Wide-Coverage.....	29
SLP Series Sleek Low-Profile.....	30-31
SLP Series Sleek Low-Profile.....	32-33
<b>Landscape Loudspeakers</b> .....	34-39
Control 80 Series.....	34-35
GSF Series Garden Ground-Stake.....	36-37
GSB Series Garden In-Ground Subwoofers.....	38-39



# About JBL

## POWER AND VERSATILITY IS ONLY THE BEGINNING.

When it comes to the listening experience, JBL never ceases to push the boundaries. From its inception over 75 years ago, the brand has grown to become synonymous with epic sound. And while the enjoyment is instinctive, the science behind each and every innovation is precise and methodical. Passionate and gifted engineers and designers around the world devote themselves to developing JBL products and solutions that take listening to the next level – and they’ve been doing it since day one.

Today, JBL professional solutions encompass recording studios, movie theatres, tour sound, installed sound, arenas and stadiums, and much more. At the heart of each of these solutions is a meticulous attention to detail, a willingness to develop everything from the ground up, and an absolute dedication to giving artists outstanding sound, whether they’re performing at a major music festival or busking on a street corner. And the technologies that JBL develops for its professional audience benefit all of JBL’s listeners as they are distilled into smaller form factors, allowing people everywhere to enjoy professional quality sound at a convenient size and an affordable price.

Over the decades, JBL has contributed a remarkable number of industry firsts and technical innovations that further cemented its reputation as an audio pioneer, garnering Grammy® awards, Academy awards, and widespread

recognition from the world’s most celebrated musicians and consumers along the way.

Expertly blending a bold vision of the future with the passion and talent of its engineers and designers, JBL develops its own solutions, invents its own technologies, and creates its own tools with a pioneering spirit that has defined the brand for the past 75 years. Today, JBL is present in more than 130 countries, encompasses an increasingly diverse range of next-level products and solutions, and has over 300 patents to its name, such as VGC™ transducer technology, Slip Stream™ low frequency port, Progressive Transition™ (PT) waveguides, and Plus One™ woofer cone technology.

Thanks to a truly exceptional dedication to constantly delivering exactly what customers desire, JBL sound has become part of the fabric of people’s lives. Whether it’s cinema sound that makes the movie-going experience more immersive, soundbars that transform the living room into a concert hall, portables that let listeners enjoy their favourite tunes wherever they go, gaming headsets that make players swear they’ve just stepped into the game, or in-car audio technology that turns the daily commute into a moment of pure listening pleasure, JBL fills listeners’ lives with sound as it was meant to be heard.





# A Journey of Engineering Excellence

Audio technology is at the core of everything JBL does. For over 75 years they have employed the best methodology and tools, developing everything from the ground up, guaranteeing their efforts exceed the needs and expectations of audio professionals throughout the world. Never straying from this exacting formula, this journey has produced a prolific list of audio achievements, ground-breaking technologies, revolutionary advances in the art and science of professional audio, many patents, and many awards. It's a journey that is legendary worldwide and has positioned JBL as the world leader in professional audio. Not just as a brand, but as a company known for consistently blending creativity and science as a manifestation of their passion for sound and commitment to those who create it.

## Transducers.

The technology of transducers is truly the starting place for the entire JBL engineering legacy. Building on founder James B. Lansing's historic foundation, JBL engineers continue to break ground on new and better ways to design transducers, reaching beyond what is commonly understood as possible and consistently setting new performance benchmarks for the audio industry. Starting from scratch and often developing patents in the process, has resulted in technologies such as Differential Drive woofers,

CMCD Cone Midrange drivers, and the D2 Dual Voice Coil Compression Driver, that cover the entire practical bandwidth of professional audio devices. Simultaneously addressing performance-robbing challenges such as power compression, heat dissipation, distortion, component weight, and physical footprint, JBL has created a range of transducers that are unparalleled in their ability to deliver extraordinary performance throughout a wide range of applications.

### Differential Drive®

JBL's exclusive dual voice coil, dual magnetic gap Differential Drive technology reduces weight while enhancing all critical performance parameters including better heat dissipation, lower power compression and higher dynamic range versus conventional single-coil designs. This allows very high output with minimal power compression, resulting in deep distortion-free bass even at very high SPL. Differential Drive® technology is now at the core of a full range of woofer models incorporated in many JBL loudspeaker systems from touring sound and fixed installation, to studio and cinema sound.

### D2 Dual Diaphragm Dual Voice Coil Compression Driver

The revolutionary D2 Dual Driver dramatically improves the sound and performance of high frequencies, providing an extreme output advantage over conventional systems with significantly higher array power, reduced

distortion, double the number of voice coils and more than double the power handling. This results in a dramatic increase in pure high frequency sound pressure levels in the same physical footprint with a 30% reduction in weight.

## Directivity.

Building better loudspeakers is only the first of many performance challenges that face all audio design engineers. Controlling the sound as it leaves the speaker enclosure is as critical to the performance of the system as the quality of the source component. The goal is always the same: create a consistent sound pattern throughout the desired vertical and horizontal plane without introducing artifacts, while ensuring the full bandwidth and SPL capability of the transducers, and providing a seamless transition from high frequency to low frequency components. JBL engineers relentlessly test new shapes and develop new materials to achieve the desired performance, often inventing new testing methodologies to ensure that nothing is left out of a thorough and rigorous examination of the design. The resulting technology has produced such ground-breaking designs as the Progressive Transition Waveguide, Image Control Waveguide, Slip Stream Port, Radiation Boundary Integrator, and Constant Curvature Waveguide. With multiple patents, and many successful installations in use worldwide, this critical component of JBL technology continues to evolve through our continuous pursuit of better, more accurate sound.

### Radiation Boundary Integrator™ (RBI)

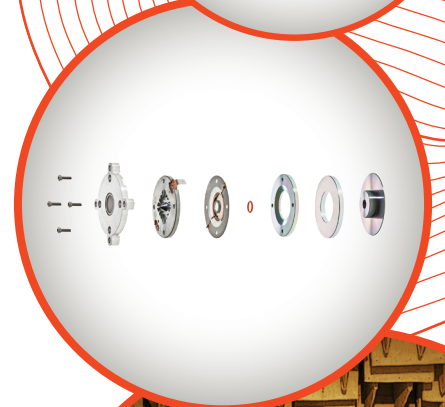
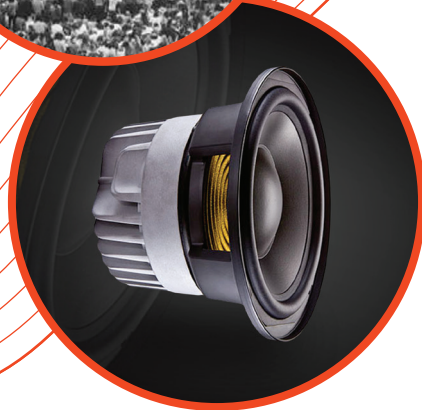
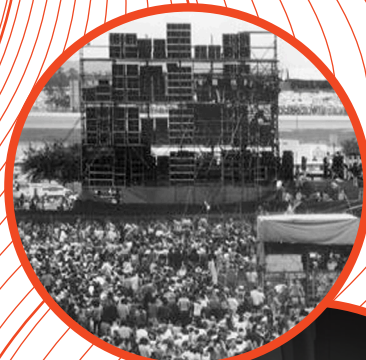
JBL's patented Radiation Boundary Integrator combines the high frequency and mid-range so the transition across each band is uninterrupted, undistorted and seamless. A patented,

tuned resonant chamber is integrated into the waveguide itself, effectively eliminating throat-related cancellations due to back pressure from the mid-range section. Our refined RBI waveguide implementation provides improved horizontal coverage - broader and more stable.

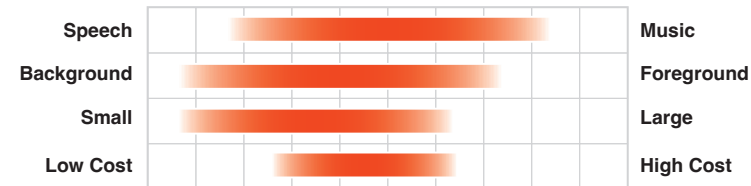
## Testing.

All audio products have a useful life, and JBL engineers are committed to making that as long as possible, not only in terms of reliability, but also in terms of how good the sound is the very first time a system is turned on. Every JBL Professional product undergoes stringent testing above and beyond what the product would face when deployed in the real world.

JBL has multiple application specific anechoic testing chambers, and has developed the only known 'Speaker Shuffler' that allows rapid and precise re-positioning of speaker systems in the exact same space for truly accurate A/B testing. This rigorous, uncompromising adherence to testing results in continuous breakthroughs in performance and ensures that JBL users worldwide can always work with confidence.







# Control 10 Series

## Blind-Mount Small Format Ceiling Loudspeakers

Control 10 Series in-ceiling loudspeakers meet the increased market demand for superior sound quality, installation-friendly features, and value, delivering a level of sonic performance unmatched by comparably priced products. They are ideal for applications where excellent sound quality is needed for medium-volume music playback and paging. Control 10 Series models feature wide bandwidth, wide coverage, and combined 70V/100V and 8-ohm operation in each loudspeaker. Dual conduit clamp allows separate strain reliefs for the input and loop out cables. VA versions with EN54 certification available, as well as high humidity grilles for Control 12, 14 and 16 models.



Black / White

### Control 12C/T

#### 3" Compact Ceiling Loudspeaker

**Frequency Response ( $\pm 3\text{dB}$ ):**  
95 Hz to 15 kHz

**Power Rating / Nominal SPL (1m)**  
40W Continuous / 84db Average,  
96dB at 15W Tap

**Impedance / Transformer:**  
8 ohms / 70V, 100V 15W

EN 54-24 Compliant Version  
Available (Control 12C-VA)



Black / White

### Control 14C/T

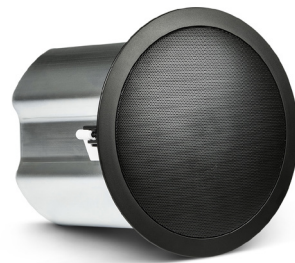
#### Two-Way 4" Coaxial Ceiling Loudspeaker

**Frequency Response ( $\pm 3\text{dB}$ ):**  
100 Hz to 20 kHz

**Power Rating / Nominal SPL (1m)**  
60W Continuous / 87db Average,  
101dB at 25W Tap

**Impedance / Transformer:**  
8 ohms / 70V, 100V 25W

EN 54-24 Compliant Version  
Available (Control 14C-VA)



Black / White

### Control 16C/T

#### Two-Way 6.5" Coaxial Ceiling Loudspeaker

**Frequency Response ( $\pm 3\text{dB}$ ):**  
96 Hz to 15 kHz

**Power Rating / Nominal SPL (1m)**  
100W Continuous / 91db Average,  
106dB at 30W Tap

**Impedance / Transformer:**  
8 ohms / 70V, 100V 30W

EN 54-24 Compliant Version  
Available (Control 16C-VA)



Black / White

### Control 18C/T

#### Two-Way 8" Coaxial Ceiling Loudspeaker

**Frequency Response ( $\pm 3\text{dB}$ ):**  
80 Hz to 16 kHz

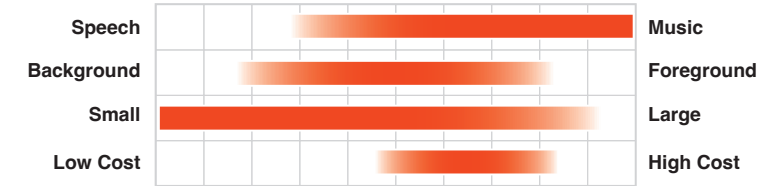
**Power Rating / Nominal SPL (1m)**  
180W Continuous / 92db Average,  
110dB at 60W Tap

**Impedance / Transformer:**  
8 ohms / 70V, 100V 60W



Culture Kings, New Zealand





## Control 47LP

## Two-Way 6.5" Coaxial Low-Profile Ceiling Loudspeaker

**Frequency Response ( $\pm 3\text{dB}$ ):**  
100 Hz to 17 kHz

**Power Rating / Nominal SPL (1m)**  
150W Continuous / 91dB Average,  
109dB at 60W Tap

**Impedance / Transformer:**  
8 ohms / 70V, 100V 60W



## Control 40CS/T

**8" High-Impact Ceiling  
Subwoofer with  
Crossover**

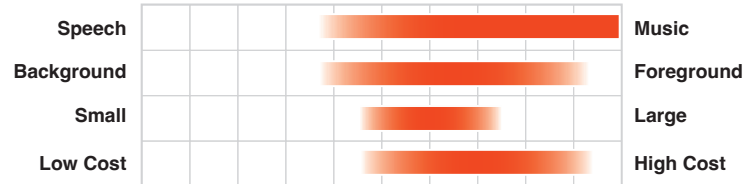
**Frequency Response ( $\pm 3\text{dB}$ ):**  
50 Hz to 180 Hz

**Power Rating / Nominal SPL (1m)**  
200W Continuous / 89dB Average  
(in centre), 108dB at 80W Tap

**Impedance / Transformer:**  
8 ohms / 70V, 100V 80W

**Impedance / Transformer:**  
8 ohms / 70V, 100V 80W





White

### Control 226C/T

**6.5" Coaxial Ceiling Loudspeaker with HF Compression Driver**

**Frequency Response ( $\pm 3\text{dB}$ ):**  
74 Hz to 17 kHz

**Power Rating / Nominal SPL (1m)**  
150W Continuous / 90dB Average, 108.3dB at 68W Tap

**Impedance / Transformer:**  
8 ohms / 70V, 100V 68W



White

### Control 227C

**6.5" Coaxial Ceiling Loudspeaker with HF Compression Driver**

**Frequency Response ( $\pm 3\text{dB}$ ):**  
75 Hz to 17 kHz

**Power Rating / Nominal SPL (1m)**  
150W Continuous / 90dB Average

**Impedance / Transformer:**  
8 ohms / N.A.

High Impedance Version Available (227CT)

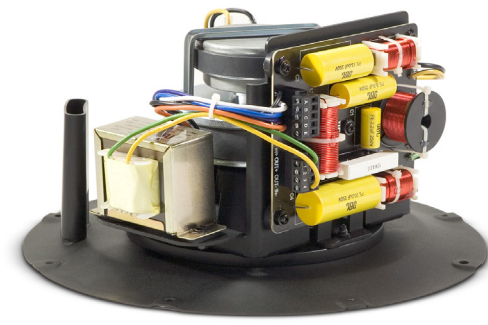
For Use with MTC-200BB6 and MTC-300BB8 backcans, MTC-RG6/8 grille, and MTC-TB6/8 tile bridge

## Control 200 Series\*

### Medium-Format Ceiling Loudspeakers

Control 226C/T, 227C and 227CT are premium in-ceiling loudspeakers designed to meet the increasing market demand for premium quality sound in ceiling-mount applications. The Control 200 Series loudspeakers incorporate breakthrough performance features such as best-in-class constant-directivity pattern control to provide a consistent sound throughout the listening area. Especially wide coverage allows fewer loudspeakers to cover the space, reducing both the material and labor cost for the installation. The high-power Kevlar™-reinforced 6.5" (165 mm) low-frequency driver along with the titanium-diaphragm compression driver and advanced-technology steep-slope crossover provide superb, wide-bandwidth sound quality.

\* Special order item. Not stocked as standard in NZ.



White

### Control 227CT

**6.5" Coaxial Ceiling Loudspeaker with HF Compression Driver**

**Frequency Response ( $\pm 3\text{dB}$ ):**  
74 Hz to 17 kHz

**Power Rating / Nominal SPL (1m)**  
150W Continuous / 90dB Average, 108.3dB at 68W Tap

**Impedance / Transformer:**  
8 ohms / 70V, 100V 68W

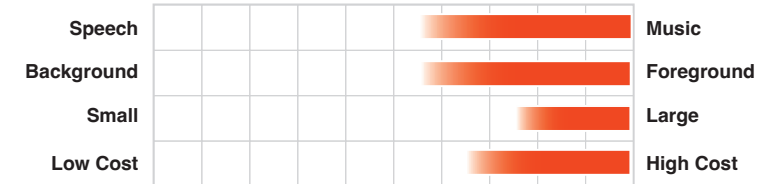
For Use with MTC-200BB6 and MTC-300BB8 backcans, MTC-RG6/8 grille, and MTC-TB6/8 tile bridge

## Control 300 Series\*

### Large-Format Ceiling Loudspeakers

Control 300 Series represents the state of the art in large-format ceiling loudspeaker systems. True point-source coax designs, multiple power levels and transformer choices, plus an in-ceiling subwoofer, make it easy to fulfill any system performance requirements. Premium components include Kevlar™-reinforced cones, low-saturation transformers and legendary JBL compression drivers. Constant-directivity coverage, advanced high-slope crossover networks, low system distortion and smooth frequency response provides full, natural music along with exceptional speech intelligibility.

\* Special order item. Not stocked as standard in NZ.



White

### Control 321C (CT)

**12" Coaxial Ceiling Loudspeaker with HF Compression Driver**

**Frequency Response ( $\pm 3\text{dB}$ ):**  
47 Hz to 16 kHz

**Power Rating / Nominal SPL (1m)**  
250W Continuous / 94dB Average, 112.3dB at 68W Tap

**Impedance / Transformer:**  
8 ohms / 70V, 100V 68W

High Impedance Version Available (Control 321CT)

For Use with Pre-Install Backbox



White

### Control 322C (CT)

**High-output 12" Coaxial Ceiling Loudspeaker**

**Frequency Response ( $\pm 3\text{dB}$ ):**  
48 Hz to 19 kHz

**Power Rating / Nominal SPL (1m)**  
400W Continuous / 95dB Average, 115dB at 100W Tap

**Impedance / Transformer:**  
8 ohms / 70V, 100V 100W

High Impedance Version Available (Control 322CT)

For Use with Pre-Install Backbox and Grille



White

### Control 328C (CT)

**8" Coaxial Ceiling Loudspeaker with HF Compression Driver**

**Frequency Response ( $\pm 3\text{dB}$ ):**  
60 Hz to 16 kHz

**Power Rating / Nominal SPL (1m)**  
250W Continuous / 93dB Average, 111dB at 68W Tap

**Impedance / Transformer:**  
8 ohms / 70V, 100V 68W

High Impedance Version Available (Control 328CT)

For Use with Pre-Install Backbox



White

### Control 312CS

**High-Output 12" Ceiling Subwoofer Loudspeaker**

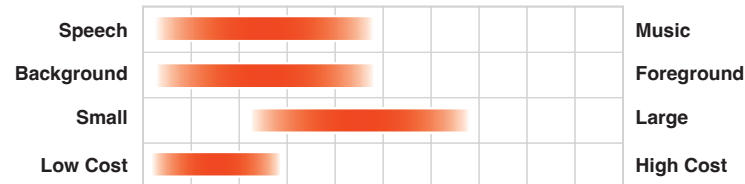
**Frequency Response ( $\pm 3\text{dB}$ ):**  
34 Hz to 3.5 kHz

**Power Rating / Nominal SPL (1m)**  
400W Continuous / 93dB Average, 115dB at 100W Tap

**Impedance / Transformer:**  
8 ohms / N.A.

For Use with Pre-Install Backbox and Grille





White

CSS8004

**Dual Cone 4" Ceiling Loudspeaker**

**Frequency Response ( $\pm 3$ dB):**  
110 Hz to 18kHz

**Power Rating / Nominal SPL (1m)**  
15W Continuous / 90dB Average,  
97dB at 5W Tap



White

CSS8008

**Dual Cone 8" Ceiling Loudspeaker**

**Frequency Response ( $\pm 3$ dB):**  
100 Hz to 16kHz

**Power Rating / Nominal SPL (1m)**  
15W Continuous / 96dB Average,  
103dB at 5W Tap



White

CSS8018

**Dual Cone High Power 8" Ceiling Loudspeaker**

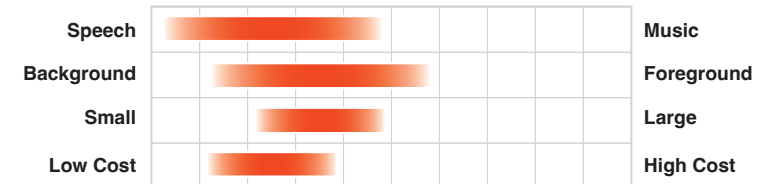
**Frequency Response ( $\pm 3$ dB):**  
90 Hz to 17kHz

**Power Rating / Nominal SPL (1m)**  
20W Continuous / 97dB Average,  
107dB at 10W Tap

## 8100 Series

### Ceiling Speakers with a Stylized Grille

High-fidelity performance at a cost-effective price point, the 8100 Series is an easy to install loudspeaker solution for a wide variety of commercial sound applications. The 8100 Series feature high sensitivity drivers that deliver maximum sound levels using minimal amplifier power. With its contemporary grill design, 70V/100V taps and open-back design, the 8100 series brings elegance and performance to basic commercial sound systems, or any application not requiring a backcan for installation.



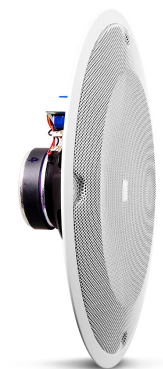
White

8124

**4" Full-Range Open Back In-Ceiling Loudspeaker**

**Frequency Response ( $\pm 10$ dB):**  
60 Hz to 18kHz

**Power Rating / Nominal SPL (1m)**  
20W Continuous / 93dB Average,  
101dB at 6W Tap



White

8138

**8" Full-Range Open Back In-Ceiling Loudspeaker for use with Pre-Install Backcans**

**Frequency Response ( $\pm 10$ dB):**  
95 Hz to 18kHz

**Power Rating / Nominal SPL (1m)**  
25W Continuous / 97dB Average,  
105dB at 6W Tap



White

8128

**8" Full-Range Open Back In-Ceiling Loudspeaker**

**Frequency Response ( $\pm 10$ dB):**  
50 Hz to 16kHz

**Power Rating / Nominal SPL (1m)**  
25W Continuous / 97dB Average,  
105dB at 6W Tap



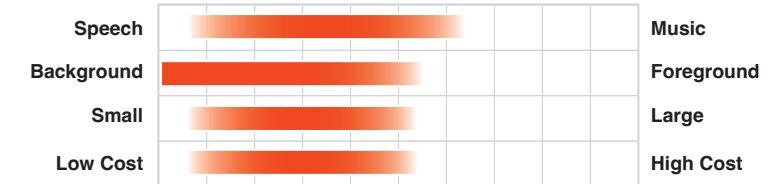


VANs Showcase Store, South Korea









## Two-Way 5.25" Compact Powered Reference Monitor

**Frequency Range (-10dB):**  
80 Hz to 20 kHz

**Power Rating / Max SPL**  
35W Cont. per ch / 111dB single, 115dB pair

Available as a stereo set (2PS)  
Can be wall mounted with optional MTC-2P kit



Control 126 W (WT)

## 8" In-Wall Loudspeaker

**Frequency Range (-10dB):**  
38 Hz to 20 kHz

**Power Rating / Nominal SPL (1m)**  
100W Continuous / 88dB Average, 103dB at 30W Tap

**Impedance / Transformer:**  
8 ohms / 70V, 100V 30W

High Impedance Version Available (Control 126WT)

**Frequency Range (-10dB):**  
30 Hz to 20 kHz

**Power Rating / Nominal SPL (1m)**  
120W Continuous / 90dB Average, 107dB at 50W Tap

**Impedance / Transformer:**  
8 ohms / 70V, 100V 50W

High Impedance Version Available (Control 128WT)



## Control 1 Pro

## Two-Way 5.25" Professional Compact Loudspeaker System

**Frequency Response ( $\pm 3\text{dB}$ ):**  
100 Hz to 18 kHz

**Power Rating / SPL**  
150W Continuous / 87dB (1m), 108 dB continuous

**Impedance / Transformer:**  
4 ohms / NA

Mounting bracket included

### Compact 6.5" Passive Two-Way Loudspeaker System

**Frequency Response (+/-3dB):**  
75 Hz to 20 kHz

**Power Rating / Nominal SPL (1m)**  
175W Continuous / 89dB

**Impedance / Transformer:**  
4 ohms / NA

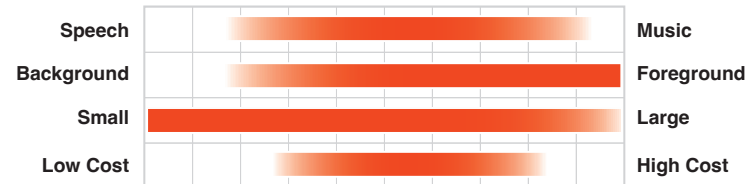
\*Special order, not stocked as standard in NZ





RYU Bar, India





 **Black / White**

## Control 23-1 (L)

## Two-Way 3" Ultra-Compact Surface-Mount Loudspeaker

**Frequency Response ( $\pm 3\text{dB}$ ):**  
95 Hz to 19 kHz

**Power Rating / Nominal SPL (1m)**  
100W Continuous / 86dB Average, 98dB at 15W Tap

**Impedance / Transformer:**  
8 ohms / 70V, 100V 15W

 **Black / White**

## Control 25-1 (L)

## Two-Way 5.25" Compact Surface-Mount Loudspeaker

**Frequency Response ( $\pm 3\text{dB}$ ):**  
85 Hz to 17 kHz

**Power Rating / Nominal SPL (1m)**  
200W Continuous / 90dB Average, 105dB at 60W Tap

**Impedance / Transformer:**  
8 ohms / 70V, 100V 60W

# Control Contractor 20 Series

## Surface-Mount Loudspeakers

Control Contractor 20 Series surface-mount loudspeakers and subwoofers deliver full, rich sound, deep bass extension, high SPL output, and wide consistent coverage for retail stores, restaurants, health clubs, theme parks, educational facilities or any application demanding top-quality sound reinforcement in a rugged, compact package. Built-in JBL Invisiball® mounting technology makes installation a breeze. Control Contractor surface-mount loudspeakers are voiced similarly to other JBL Control Contractor models, allowing them to be combined with in-wall and in-ceiling loudspeakers in a single listening space.

 **Black / White**

## Control 28-1 (L)

## Two-Way 8" High-Output Surface-Mount Loudspeaker

**Frequency Response ( $\pm 3\text{dB}$ ):**  
62 Hz to 16 kHz

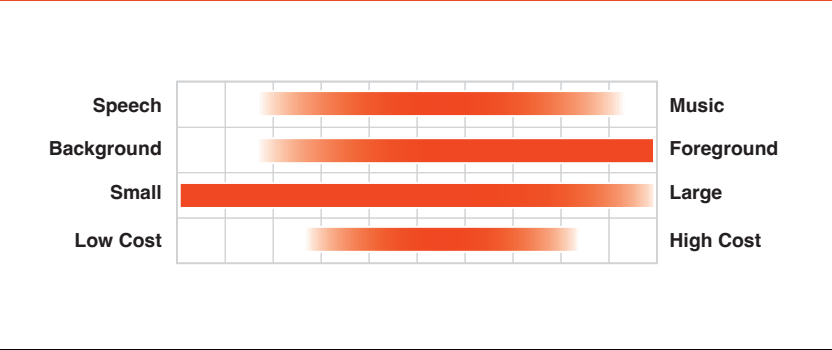
**Power Rating / Nominal SPL (1m)**  
240W Continuous / 91dB Average, 109dB at 60W Tap

**Impedance / Transformer:**  
8 ohms / 70V, 100V 60W



Outdoor capabilities can be further enhanced with optional high-IP WeatherMax™ and/or Marine Kit grilles.





## Control 25AV

**Two-Way 5.25" Video Shielded Compact  
Surface-Mount Loudspeaker**

**Frequency Range (-10dB):**  
70 Hz to 23 kHz

**Power Rating / Nominal SPL (1m)**  
200W Continuous / 87dB Average, 105dB at 60W Tap

**Impedance / Transformer:**  
8 ohms / 70V, 100V 60W

**Power Rating / Nominal SPL (1m)**  
200W Continuous / 87dB Average, 105dB at 60W Tap



## Control 29AV-1

**Two-Way 8”  
Surface-Mount  
Loudspeaker**

**Frequency Response ( $\pm 3\text{dB}$ ):**  
43 Hz to 15 kHz

**Power Rating / Nominal SPL (1m)**  
300W Continuous / 90dB Average,  
110.4dB at 110W Tap

**Impedance / Transformer:**  
8 ohms / 70V, 100V 110W

**Power Rating / Nominal SPL (1m)**  
300W Continuous / 90dB Average,  
110.4dB at 110W Tap



## Control 30

**Three-Way 10" Surface-Mount Loudspeaker**

**Frequency Response ( $\pm 3\text{dB}$ ):**  
40 Hz to 16 kHz

**Power Rating / Nominal SPL (1m)**  
500W Continuous / 93dB Average,  
115dB at 150W Tap

**Impedance / Transformer:**  
4 ohms / 70V, 100V 150W

**Power Rating / Nominal SPL (1m)**  
500W Continuous / 93dB Average,  
115dB at 150W Tap



## Control 31

**Two-Way 10" Surface-Mount Loudspeaker**

**Frequency Response ( $\pm 3\text{dB}$ ):**  
42 Hz to 14 kHz

**Power Rating / Nominal SPL (1m)**  
500W Continuous / 92dB Average,  
114dB at 150W Tap

**Impedance / Transformer:**  
4 ohms / 70V, 100V 150W

**Power Rating / Nominal SPL (1m)**  
500W Continuous / 92dB Average,  
114dB at 150W Tap



## Control SB2210

**Dual 10" Compact Subwoofer**

**Frequency Response ( $\pm 3\text{dB}$ ):**  
48 Hz to 95 Hz

**Power Rating / Nominal SPL (1m)**  
1000W Continuous / 95dB Average,  
120dB at 300W Tap

**Impedance / Transformer:**  
4 ohms / 70V, 100V 300W

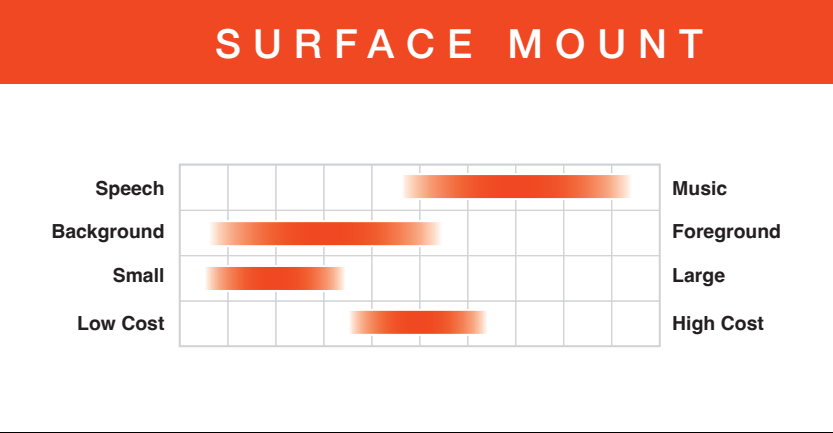
**Power Rating / Nominal SPL (1m)**  
1000W Continuous / 95dB Average,  
120dB at 300W Tap

# Control 50 Series

## **Subwoofer-Satellite Loudspeaker System**

The Control 50 Series subwoofer-satellite loudspeaker system provides high fidelity sound in any location where full-range high fidelity foreground/ background music is required from a surface-mount system. The Control 50S/T subwoofer can be utilized with either two of four Control 52 satellite loudspeakers. The Control 50 system is mono. Both the Control 50S/T and Control 52 can be intermixed in systems along with the in-ceiling and pendant subwoofer and satellite models to match the form factor requirements of a wide variety of applications and architectures.

The Control 50 Series subwoofer-satellite loudspeaker system provides high fidelity sound in any location where full-range high fidelity foreground/ background music is required from a surface-mount system. The Control 50S/T subwoofer can be utilized with either two of four Control 52 satellite loudspeakers. The Control 50 system is mono. Both the Control 50S/T and Control 52 can be intermixed in systems along with the in-ceiling and pendant subwoofer and satellite models to match the form factor requirements of a wide variety of applications and architectures.



## Control 50 PACK

**Surface-Mount Subwoofer-Satellite  
Loudspeaker System**

**Frequency Response ( $\pm 3\text{dB}$ ):**  
50 Hz to 17 kHz

**Power Rating / Nominal SPL (1m)**  
200W Continuous / 85-87dB Average, 104-106dB at 80W Tap

**Impedance / Transformer:**  
4-8 ohms / 70V, 100V 80W

**Power Rating / Nominal SPL (1m)**  
200W Continuous / 85-87dB Average, 104-106dB at 80W Tap



## Control 50S/T

**Surface-Mount Subwoofer**

**Frequency Response ( $\pm 3\text{dB}$ ):**  
50 Hz to 150 Hz

**Power Rating / Nominal SPL (1m)**  
300W Continuous / 89dB (centre) 95dB (Corner) Average, 108-114dB at  
80W Tap

**Impedance / Transformer:**  
8 ohms / 70V, 100V 80W

**Power Rating / Nominal SPL (1m)**  
300W Continuous / 89dB (centre) 95dB (Corner) Average, 108-114dB at 80W Tap

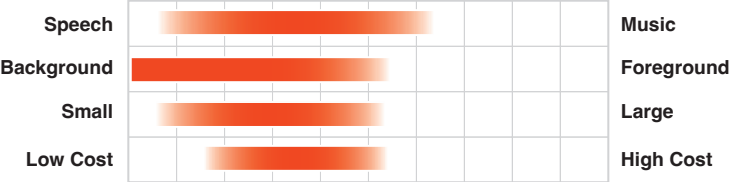
24





Nam Nghi Resort's Rock Island Club, Vietnam





Black / White

Control CRV

Dual 4” Versatile High Design Loudspeaker

**Frequency Range (-10dB):**  
80 Hz to 20 kHz

**Power Rating / Nominal SPL (1m)**  
150W Continuous / 89dB Average, 104dB at 30W Tap

**Impedance / Transformer:**  
4 ohms / 70V, 100V 30W

Control CRV\*

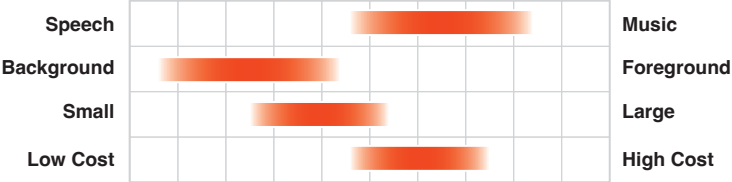
Architectural Loudspeaker

The Control CRV brings high design and versatility to high-finish commercial venues that require a fashionable look. JBL Control CRV loudspeakers are exceedingly versatile, with multiple installation possibilities -- wall-mounted aimed straight out, angled down at a 45° aiming axis, mounted spanning the junction of a wall and ceiling, or spanning the junction of two walls. Two, three, or four (with optional PMB pole-mount bracket) Control CRV loudspeakers can be joined together to create loudspeaker solutions for a wide variety of coverage, appearance, and mounting requirements.

Control HST

Wide-Coverage Loudspeaker with HST Technology™

The Control HST utilizes JBL’s patent pending Hemispherical Soundfield Technology™ to achieve extremely wide coverage of the listening space along with eliminating the primary wall reflection that tends to cause inconsistent sound when loudspeakers are attached to a wall. The wide hemispherical sound field covers from wall to wall, allowing a single loudspeaker to provide full-range sound to a large listening area. This can reduce the number of loudspeakers needed for covering a space, lowering the overall cost for a sound system.



Black / White

Control HST

Wide-Coverage Loudspeaker with 5.25” LF and Dual Tweeters

**Frequency Response (±3dB):**  
68 Hz to 18 kHz

**Power Rating / Nominal SPL (1m)**  
100W Continuous / 88dB Average, 106dB at 60W Tap

**Impedance / Transformer:**  
8 ohms / 70V, 100V 60W

\* Special order item. Not stocked as standard in NZ.



Coal Drops Yard, UK

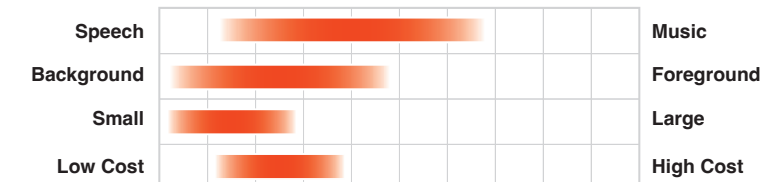




# SLP Series New!

## Sleek Low-Profile Speakers

SLP sleek, low-profile full-range on-wall loudspeakers provide superior sound and broad, consistent coverage in a sleek, low-profile enclosure that deliver the legendary sound that JBL is known for. These elegantly finished speakers complement any décor and are available in black or white finishes. These stylish, low-profile speakers feature a downward tilt to their aim, allowing them to be installed flat to the wall, making them perfect for venues such as high-finish restaurants, hotels, resorts, retail stores, and any installation application calling for a discreet yet elegant look.



 **Black / White**

## SLP 12/T

### Sleek, 3" Low-Profile On-Wall Loudspeaker

**Frequency Response ( $\pm 3\text{dB}$ ):**  
110 Hz to 15 kHz

**Power Rating / Nominal SPL (1m)**  
60W Continuous / 84dB Average, 96dB at 15W Tap

**Impedance / Transformer:**  
8 ohms / 70V, 100V 15W

Includes slide-in wall bracket and terminal rain cover  
Sonically matched to JBL Control 12C/T ceiling loudspeakers

 **Black / White**

## SLP 14/T

### Sleek, 4" Low-Profile On-Wall Loudspeaker

**Frequency Response ( $\pm 3\text{dB}$ ):**  
105 Hz to 17 kHz

**Power Rating / Nominal SPL (1m)**  
90W Continuous / 86dB Average, 100dB at 25W Tap

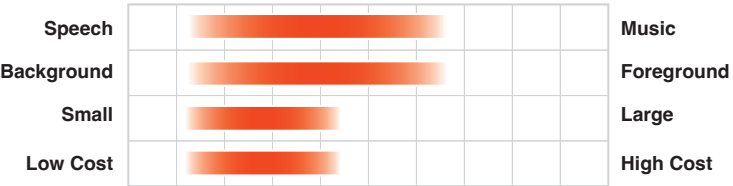
**Impedance / Transformer:**  
8 ohms / 70V, 100V 25W

Includes slide-in wall bracket and terminal rain cover  
Sonically matched to JBL Control 14C/T ceiling loudspeakers





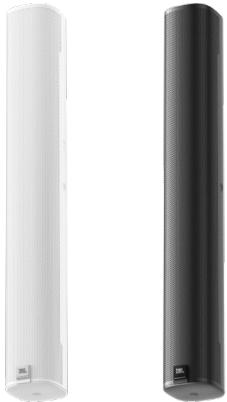
SURFACE MOUNT



COL Series New!

Slim Columns with Downward-Angled Aiming

The COL 600 and 800 models are discrete column loudspeakers with a downward tilt to their aim, allowing them to be installed flat to the wall while the sound is aimed toward the listening plane. Included L-brackets mount to the top and bottom (allowing horizontal rotation) or to left-right center points, and included wall bracket allows for further vertical aiming.



Black / White

COL600

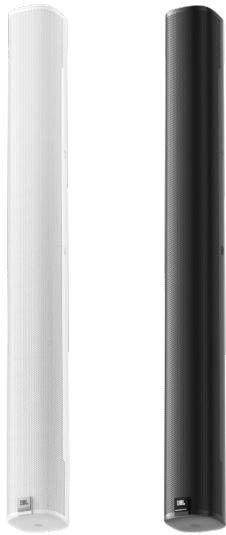
600mm (24in) Tall Column Speaker

(2) 5 x 2.25 inch racetrack woofers and (1) 1 inch tweeter

70 Hz – 20 kHz frequency range

Wide 160° horizontal and focused 110° vertical coverage

111 dB peak SPL (105 dB continuous), 2 hrs



Black / White

COL800

800mm (32in) Tall Column Speaker

(4) 5-inch x 2.25-inch racetrack woofers and (2) 0.8-inch tweeters

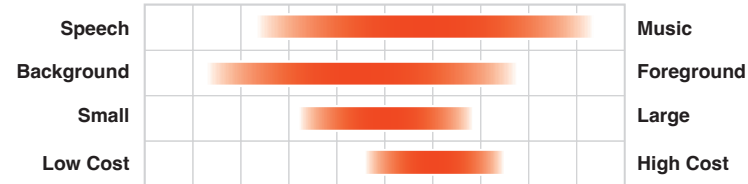
85 Hz – 20 kHz frequency range

Wide 160° horizontal and focused 60° vertical coverage

116 dB peak SPL (110 dB continuous), 2 hrs







Green

## Control 85M

**Two-Way 5.25" Coaxial  
Mushroom Landscape Loudspeaker**

**Frequency Response ( $\pm 3\text{dB}$ ):**  
65 Hz to 16 kHz

**Power Rating / Nominal SPL (1m)**  
160W Continuous / 86dB Average, 101dB at 30W Tap

**Impedance / Transformer:**  
8 ohms / 70V, 100V 30W



Green

## Control 88M

**Two-Way 8" Coaxial  
Mushroom Landscape Loudspeaker**

**Frequency Response ( $\pm 3\text{dB}$ ):**  
60 Hz to 15 kHz

**Power Rating / Nominal SPL (1m)**  
240W Continuous / 87dB Average, 105dB at 60W Tap

**Impedance / Transformer:**  
8 ohms / 70V, 100V 60W



Green

## Control 89MS

**8" Mushroom Landscape Subwoofer  
Loudspeaker with Low-Pass Crossover**

**Frequency Response ( $\pm 3\text{dB}$ ):**  
53 Hz to 110 Hz

**Power Rating / Nominal SPL (1m)**  
300W Continuous / 87dB Average, 106dB at 80W Tap

**Impedance / Transformer:**  
8 ohms / 70V, 100V 80W

New!

# Control 80 Series\*

## Landscape Loudspeakers

The Control 80 Series mushroom-type landscape loudspeakers feature high fidelity performance for outdoor on-ground use in applications such as hotels, restaurants, and shopping complexes. A wide frequency response and 360° of horizontal coverage ensure coverage of outdoor spaces with top-quality music and/or intelligible paging. Color is infused throughout the enclosure case to minimize the visual impact of the nicks and scratches that can happen with outdoor loudspeakers. The Control 80 Series are IP-56 rated as per IEC529. The Control 89MS can be added into a system to augment the low-frequency performance.

\* Special order item. Not stocked as standard in NZ.  
Demo stock available



Park Lane Hotel, Cyprus





 **Green / Tan**

## GSF3


## Two-Way 3" Coaxial Ground-Stake Landscape Loudspeaker

**Frequency Response ( $\pm 3\text{dB}$ ):**  
130 Hz to 17 kHz

**Power Rating / Nominal SPL (1m)**  
60W Continuous / 80dB Average, 92dB at 15W Tap

**Impedance / Transformer:**  
8 ohms / 70V, 100V 15W

Includes Ground Stake and L-Bracket for wall mounting

 **Green / Tan**

## GSF6

## Two-Way 6" Coaxial Ground-Stake Landscape Loudspeaker

**Frequency Response ( $\pm 3\text{dB}$ ):**  
95 Hz to 20 kHz

**Power Rating / Nominal SPL (1m)**  
100W Continuous / 88dB Average, 103dB at 30W Tap

**Impedance / Transformer:**  
8 ohms / 70V, 100V 30W

Includes Ground Stake and L-Bracket for wall mounting

# GSF Series New!

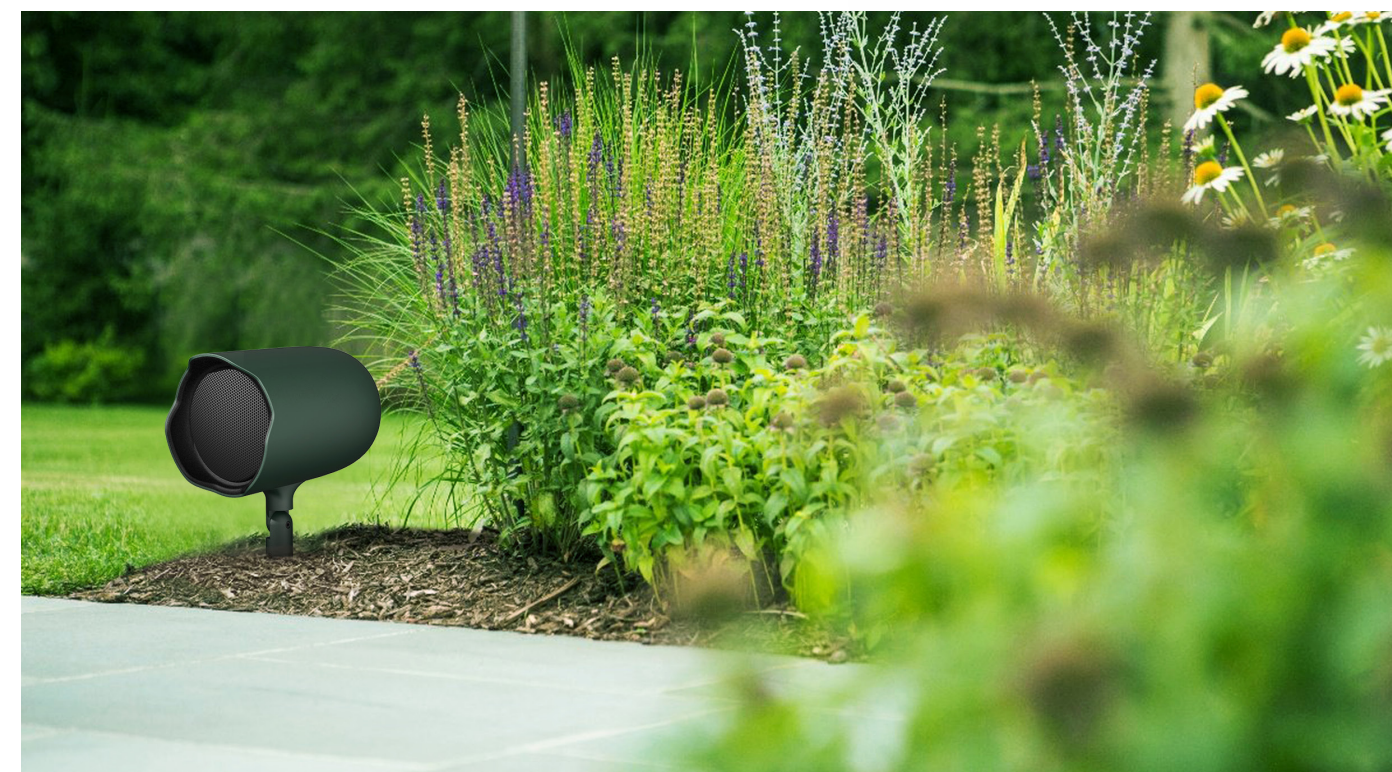
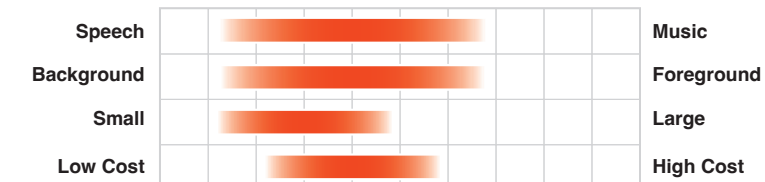
New!

## Garden Ground-Stake Full-Range Speakers

Weather-resistant JBL GSF garden ground-stake full-range speakers provide superior fidelity and wide coverage in a range of outdoor commercial applications. Available in hunter green and tan finishes, these speakers are the perfect sound solution for diverse outdoor applications including shopping malls, theme parks, sports venues, hospitality venues, and any application calling for a stylish, robust, great-sounding landscape speaker system.

(includes L-bracket and ground stake)

**Special order item. Not stocked as standard in NZ.  
Demo stock available**







## Garden In-Ground Subwoofers

**Special order item. Not stocked as standard in NZ.  
Demo stock available**

 **Green / Tan**

## GSB8

**Frequency Response ( $\pm 3\text{dB}$ ):**  
43 Hz to 120 Hz

**Impedance / Transformer:**  
6 ohms / 70V, 100V 100W

 Green / Tan

## GSB12

**Frequency Response ( $\pm 3\text{dB}$ ):**  
39 Hz to 107 Hz

**Impedance / Transformer:**  
6 ohms / 70V, 100V 200W



# Understanding Control Contractor

The diagram shows the model name "Control 47C/T" in a large, black, sans-serif font. Three red lines point from descriptive text to parts of the model name: a vertical line from "Approximate Size of Low-Frequency Driver (6.5")" to the "47"; a vertical line from "Part of the 40 series (Ceiling Speakers with RBI™)" to the "47"; and a horizontal line from "Application Type (C=Ceiling)" to the "C". Below the model name, the text "Transformer Type (/T = both low-impedance and Transformer)" is shown, with a horizontal red line pointing from the "/T" to this text.

Control 47C/T

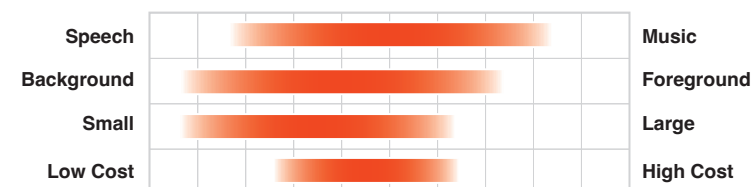
Approximate Size of Low-Frequency Driver (6.5")

Application Type (C=Ceiling)

Transformer Type (/T = both low-impedance and Transformer)

Part of the 40 series (Ceiling Speakers with RBI™)

# Annotations



\* Speech/Music range based on frequency response.

\* Any music-capable speaker is also speech capable.

\* Ratings based on best used of the speaker line's capabilities.

\* Background/Foreground range based on SPL capability for music content along with typical listening distances.

\* Small/Large range based on physical size.

\* Low-Cost/High-Cost range based on product's form-factor market.

\* For full technical specifications please refer to the product Spec Sheet which can be found on <https://jblpro.com/en>

# Suffix and Prefix Guide

(not all accessories are shown in brochure):

<b>C</b> .....	Ceiling Speaker
<b>CT</b> .....	Ceiling Speaker with non-bypassable transformer, for 100V or 70V distributed speaker line
<b>C/T</b> .....	Ceiling Speaker with bypassable transformer, for either low-impedance or 100V/70V distributed speaker line
<b>LP</b> .....	Low-Profile Speaker (shallow, for use in ceilings with limited space above ceiling surface)
<b>HC</b> .....	High-Ceiling Speaker (narrow coverage, which works better for high ceiling applications)
<b>P</b> .....	Pendant Speaker
<b>P/T</b> .....	Pendant Speaker with bypassable transformer, for either low-impedance or 100V/70V distributed speaker line
<b>S</b> .....	Subwoofer (in most cases)
<b>C-VA</b> .....	Voice Announcement (special certification for use in voice announcement systems)
<b>LS</b> .....	UL Life Safety (may also have VA certification)
<b>AV</b> .....	Audio-Video Shielded (for use close to magnetically sensitive equipment)
<b>W</b> .....	In-Wall Speaker
<b>WT</b> .....	In-Wall Speaker with non-bypassable transformer, for 100V or 70V distributed speaker line
<b>MTC</b> .....	Mounting Bracket or accessory
<b>WMG and MK</b> .....	WeatherMax™ Grille and Marine-Kit (for extreme weather locations)
<b>UB</b> .....	U-Bracket
<b>CM</b> .....	Ceiling-Mount Adapter Arm (for surface-mount speakers)
<b>NC</b> .....	New-Construction Installation Bracket
<b>MR</b> .....	Plaster (“Mud Ring”) Installation Bracket
<b>BB</b> .....	Backbox (or backcan)
<b>SG</b> .....	Square Grille
<b>RG</b> .....	Round Grille
<b>TB</b> .....	Tile Bridge
<b>TR</b> .....	Trim Ring





# CONTROL CONTRACTOR

SCALABLE, INTEGRATED, INSTALLED AUDIO SOLUTIONS

**2023**

## NEW ZEALAND DISTRIBUTOR

**JPRO | Experience AVC**  
6A Doncaster Street  
Mangere, Auckland, 2022  
ph: +64 9 275 8710  
e: [hello@jpro.co.nz](mailto:hello@jpro.co.nz)  
[www.jpro.co.nz](http://www.jpro.co.nz)



Find your local JBL representative: [jblpro.com/en/distributors](http://jblpro.com/en/distributors)

JBL Control Contractor NZ Edition Aug 2023 V/2 - w CC Expansion